



# Moon Planting- Myth or Fact?

BY: MR. H

# Hypothesis

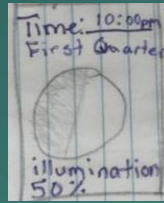
- ▶ According to The Old Farmer's Almanac, moon planting “is the idea that the lunar cycle affects plant growth. Just as the Moon's gravitational pull creates the tides of the oceans, it also creates more moisture in the soil, which encourages growth”
- ▶ I believe that this is Myth because the moon can't help the plant grow so I think it isn't a fact I think it is a Myth
- ▶ I will use observations and data collection to answer the question,

Does the moon affect how plants grow?

# Data Collection

Day 0 Planting day

Moon phase- waxing moon



Seeds planted= Zucchini and cantaloupe



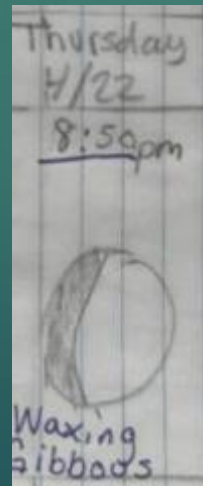
# 1<sup>st</sup> Big observation/ moon phase day 9



Plants needed water



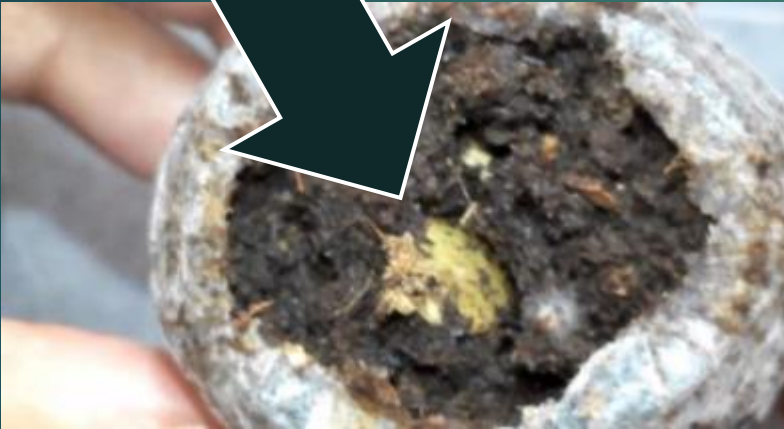
Moon  
Phase




# Next Big observation

▶ WE HAVE NEW SROUTS!!!!!!

▶ Day 7 4-26-21



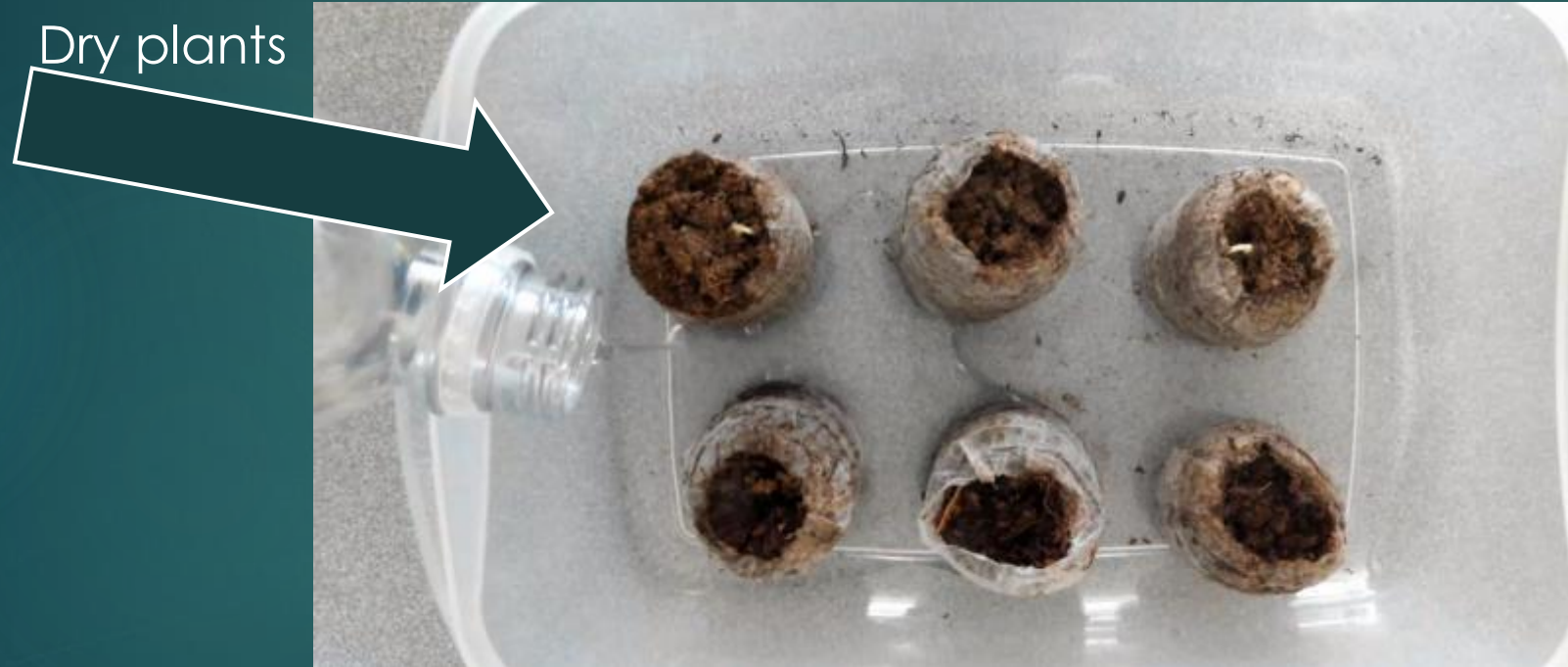
Mon.  
4/26  
pink/super  
Moon  
  
100%  
Illumination





# Taking care of sprouts

Watering day 9 4-28-21



# Still Taking care of sprouts

Watering day 13 5-3-21

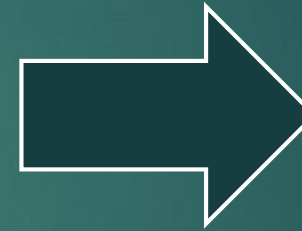
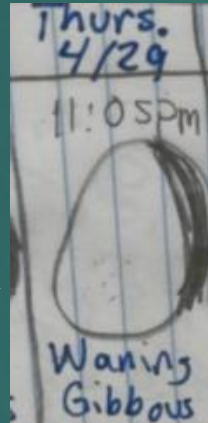
water



# Waning Moon Plants

- ▶ Day 1 4-29-21 planted new cantaloupe and zucchini

- ▶ Moon Phase





# 1<sup>st</sup> Watering Day YAY

- ▶ 5-3-12 watering day 4
- ▶ Really dry



# We Got Sprouts YAY!!!!!!!

► Spouts this day 8 5-8-21



# Side by side comparison

Waxing moon plants day 14



Waning moon plants day 15



Which one looks like a plant ?

# conclusion

- ▶ According to my findings, it seems that the moon dose help the waxing plants grow strong and good.

- ▶ Example day 9 →

